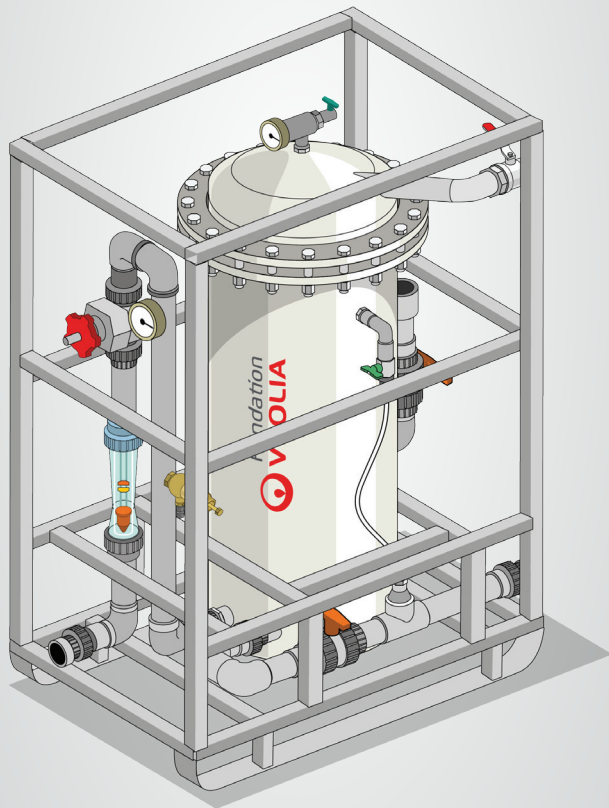


Aquaforce 15000

Mobile water treatment unit by ultrafiltration
Capacity : 15,000 people

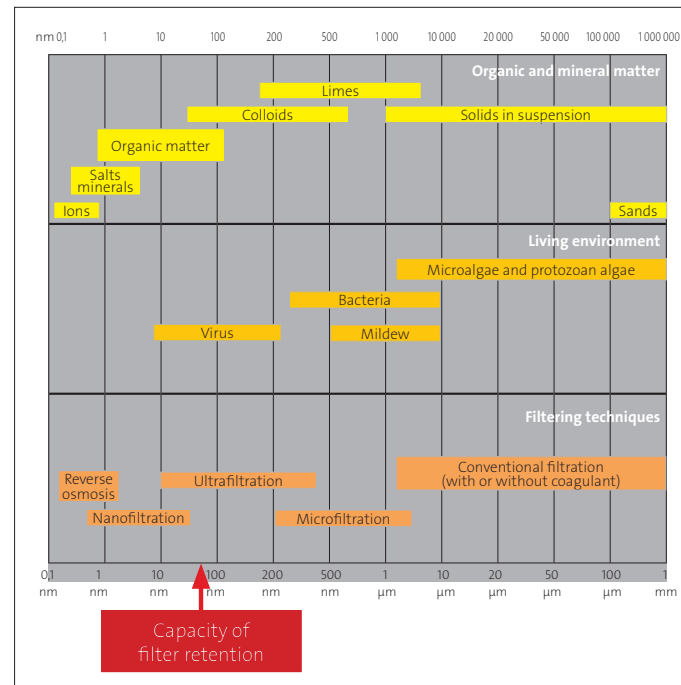


The mobile unit

- ▶ A mobile unit for the production of drinking water, autonomous and of large capacity (15 m³/h), adapted to the context of humanitarian emergency for direct distribution to the affected population and/or in refugee camps.
- ▶ Two 7,500 modular lines that can be separated or operated in parallel to meet the needs and different realities on the ground.
- ▶ A high production rate and additional equipment to adapt quickly to all contexts: access to water to be treated, distribution methods envisaged... (networks, standpipes, water trucking...).
- ▶ A deployment accessible to the greatest number of people: simplified and robust equipment for long-term use of the station; pedagogical training materials allowing a quick introduction.

Ultrafiltration

Equipped with ultrafiltration membranes with a cut-off threshold of 0.04 µm, Aquaforce 15,000 eliminates all colloids and bacteria, as well as the majority of viruses potentially present in raw water. The procedure is completed by a granular activated carbon treatment to treat colour, odour and some complex pollution. The treatment is completed by the injection of chlorine to finalize the disinfection and ensure persistence in the distributed water.



In the field

Uganda, 2018: refugee camps

A unit has been deployed in partnership with Médecins Sans Frontières/Doctors Without Borders to contain a cholera epidemic. Operation, during four months, has validated the operation of the Aquaforce 15,000.



Mozambique, 2019: Cyclone Idai

A 7,500 line, producing half the maximum capacity of the Aquaforce 15,000, has been deployed in a cholera treatment centre in the city of Beira.

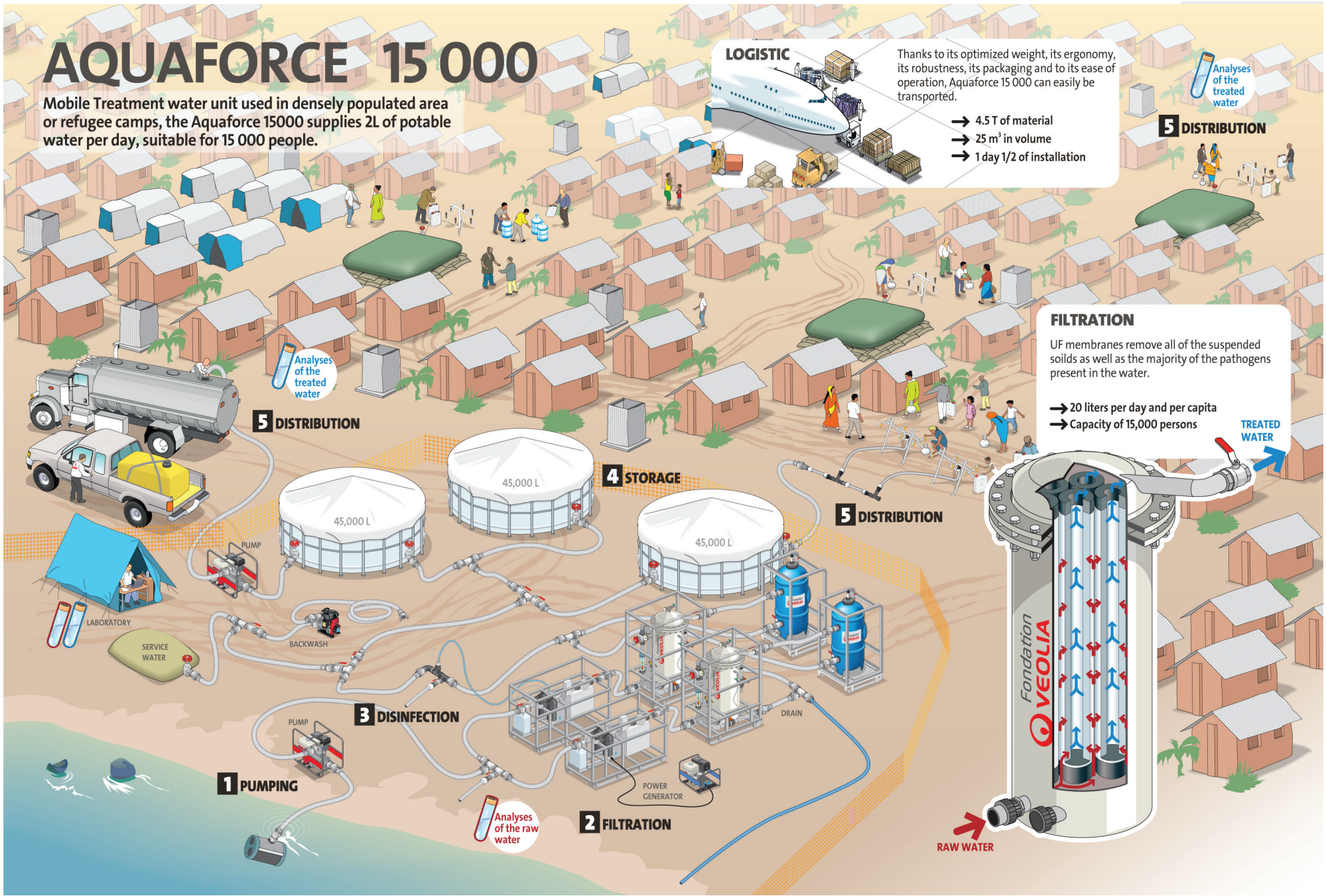


TECHNICAL INFORMATION

Weight: 4,5 tonnes
Volume: 25 m³
Flow rate: 15 m³/h

Capacity: 15,000 people*
Mounting time: 2 days
Cut-off threshold: 0.04 µm

*According to WHO recommendations.



AQUAFORCE 15 000

Mobile Treatment water unit used in densely populated area or refugee camps, the Aquaforce 15000 supplies 2L of potable water per day, suitable for 15 000 people.

LOGISTIC

Thanks to its optimized weight, its ergonomy, its robustness, its packaging and to its ease of operation, Aquaforce 15 000 can easily be transported.

- 4.5 T of material
- 25 m³ in volume
- 1 day 1/2 of installation

Analyses of the treated water

5 DISTRIBUTION

FILTRATION

UF membranes remove all of the suspended solids as well as the majority of the pathogens present in the water.

- 20 liters per day and per capita
- Capacity of 15,000 persons

TREATED WATER

4 STORAGE

5 DISTRIBUTION

5 DISTRIBUTION

3 DISINFECTION

2 FILTRATION

1 PUMPING

Analyses of the raw water

RAW WATER